



Fleet Road | | Fleet | GU51 4BE

Asking Price £285,000

Leasehold

Waterford's W
Residential Sales & Lettings

Fleet Road |
Fleet | GU51 4BE
Asking Price £285,000

Brand new 2-bedroom, 1-bathroom apartments for sale on Fleet High Street. With allocated parking, 999 year lease and very low service charges these 2 apartments will be ideal for first-time buyer and investors alike.

- 2-Bedrooms, 1-Bathroom Apartment
- Allocated Parking
- Built to an Excellent Standard
- High Ceilings Throughout
- Spacious Entrance Hall
- Fleet High Street Location
- 999 Year Lease and Low Service Charges
- Peppercorn Ground Rent
- Built-In Appliances in Kitchen
- Vaulted Ceiling in the Living / Kitchen Room

Property Description

Brand new 2-bedroom, 1-bathroom apartments on Fleet's High Street. This apartment is an excellent opportunity for first-time buyers and investors alike.

This property has the benefit of two double bedrooms, serviced by the family bathroom. The real gem of Flat B is this apartment contains a separate utility room in addition to the vaulted ceiling in the living room which creates a real sense of space and granger. The open plan kitchen / living room further benefits from dual aspect





sash windows and built-in appliances.

With these apartments you will really notice the attention to detail the developers have put in place with the herringbone flooring, high ceilings throughout, character covering along all walls and brand new sash windows providing quietness and efficiency while maintaining the charm of these apartments. Additionally, each apartment will benefit from 1 allocated parking space.

Located within walking distance to Fleet town centre, which offers a range of shops, leisure facilities and local amenities. Fleet railway station and M3 motorway are easily accessible providing excellent commuter routes to London and The South.

Council Tax Band: TBC

Lease Length: 999

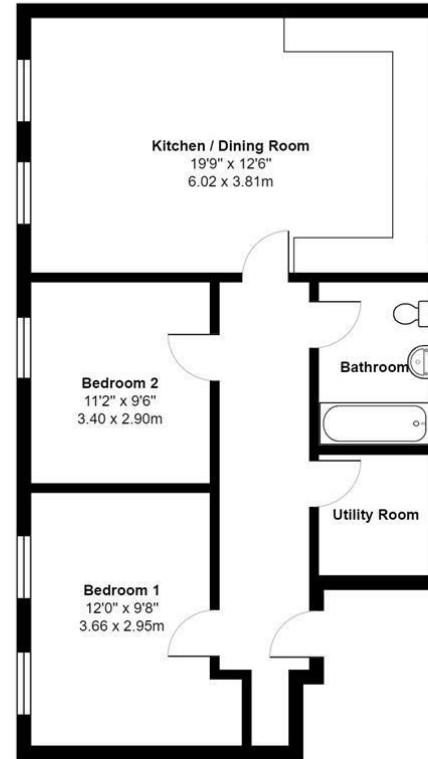
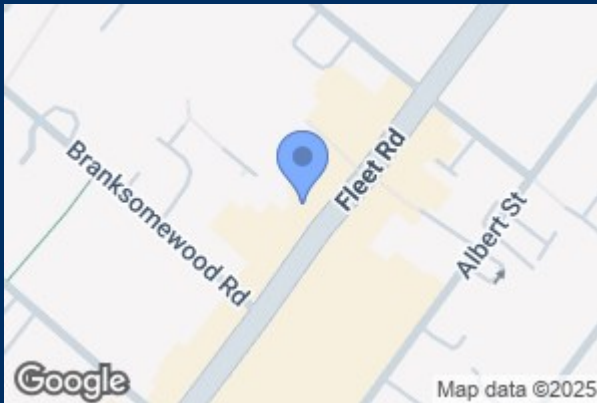
Service Charges: £0 (Peppercorn)

Service Charges: TBC

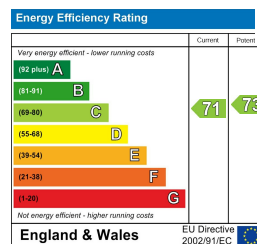
Disclaimer: This Information has been obtained and provided by the Property Owner

Are you looking to buy a property in Fleet? Then Waterfords Estate Agents are here to help you. As your trusted local estate agent in Surrey and Hampshire since 1995, you can ask us any questions about Fleet and the surrounding area. Feel free to pop into our branch in the Hart Centre to talk to us or call us on 01252 623333. We look forward in assisting you with buying a home in Fleet!

Are you wondering: how much is my house worth in Fleet? Waterfords Estate Agents can provide you with a home valuation based on the latest sales agreed for similar properties as well as valuable insights into buyers based on our extensive database. We take an analytical approach to ensuring that your property is priced correctly and ready to be sold quickly. All our advice is free and without obligation.



Total Area: 702 ft² ... 65.2 m²
All measurements are approximate and for display purposes only



39 The Hart Centre
Fleet
Hampshire
GU51 3LA
01252 623333
fleet@waterfords.co.uk